

POSX
POINT OF SALE SIMPLIFIED

www.pos-x.com | 360.738.8433 | support@pos-x.com

QUICKSTART GUIDE

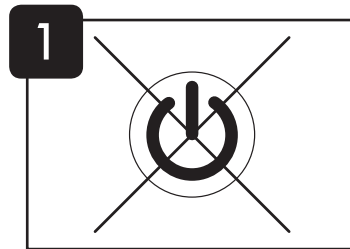
EVO 2D BARCODE SCANNER

EVO-SG1-AD

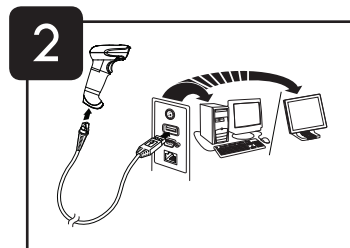
Download the full owner's manual:
www.pos-x.com/downloads

document version 1.0

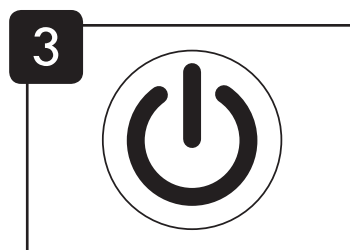
GETTING STARTED



Turn the computer **OFF**.

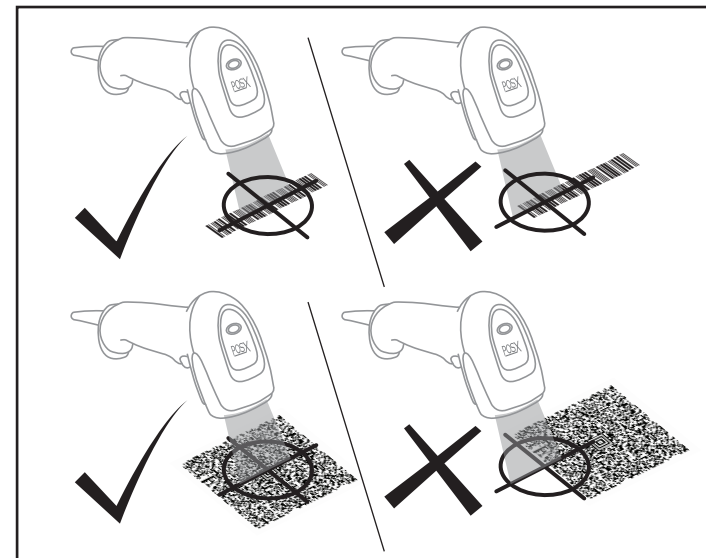


Connect the scanner
USB plug into a USB
port on the computer.



Turn the computer **ON**.

READING TECHNIQUE



The scanner projects an aiming beam that should be centered over the bar code for optimal performance.

Hold the scanner closer to small codes and farther away from larger codes for best results.

SCANNER SETTINGS

RESET DEFAULTS

Scan the barcode below to reset the scanner to all factory defaults.



Standard Product Defaults

SCAN MODE

TRIGGER MODE: Scan the code below to activate the manual trigger mode. In this mode, the scanner will only activate when the trigger is pulled.



Manual Trigger - Normal
(Default)

PRESENTATION MODE: Scan the code below to activate the presentation mode. In this mode, the scanner will automatically "see" a barcode and scan it.



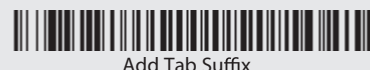
Presentation Mode

SUFFIXES

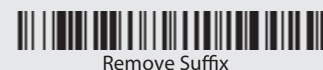
Scan the appropriate barcode below to add a Carriage Return or Tab, or remove all suffixes.



Add CR Suffix



Add Tab Suffix



Remove Suffix

CODE ID PREFIX

Scan the barcode below to add a Code ID prefix to all symbologies

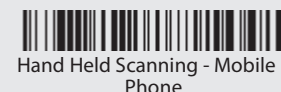


Add Code ID Prefix To All Symbologies
(Temporary)

Note: For a complete list of Code IDs, see the Owner's manual at www.pos-x.com/downloads

MOBILE PHONE READ MODE

Scan the barcodes below to optimize scanning on mobile phones or other backlit LED devices.



Hand Held Scanning - Mobile
Phone



Presentation Scanning - Mobile
Phone

Note: To turn off Mobile Phone Read Mode, scan the desired mode in the "SCAN MODE" section.

INTERFACE PROGRAMMING

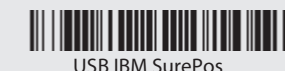
Scan the appropriate barcode below for the desired interface.



Keyboard Wedge
IBM PC AT and Compatibles with
CR suffix



USB IBM SurePos
(USB Handheld Scanner)
Interface



USB IBM SurePos
(USB Tabletop Scanner)
Interface



USB Keyboard (PC)



USB Keyboard (Mac)



USB Japanese Keyboard (PC)



USB HID Bar Code Scanner

DATA FORMAT EDITING

The following are abbreviated instructions for entering a data format. For compete instructions, refer to your Owner’s Manual, which can be downloaded from www.pos-x.com/downloads.

- 1. Scan the **Enter Data Format** code.
- 2. Primary/Alternate Format: Scan “0” for Primary Format.
- 3. Terminal Type: Scan “099” for any bar code type.
- 4. Code ID: Scan “00” for any bar code type.
- 5. Length: Scan “9999” for any length bar code.
- 6. Editor commands: Use the “CODE BYTES” section.
- 7. Scan **Save** to save your entries.



Enter Data Format



Clear All Data Formats



Save

CODE BYTES

The codes below are used to enter numeric values for various settings explained throughout this quickstart guide and the Owner’s Manual.



0



4



1



5



2



6



3



7



8



9



A



B



C



D



E



F



Save

PREVENTIVE MAINTENANCE

KEEPING YOUR SCANNER CLEAN

- 1. DISCONNECT THE SCANNER FROM THE COMPUTER/POWER SUPPLY!
- 2. Wearing latex (or similar) gloves, Use Isopropyl alcohol lightly applied to a microfiber towel to gently clean the housing and front plastic.

DO NOT use ammonia, soap, or acid-based cleaners as they can cause permanent damage to the unit.

DISCLAIMER

POS-X reserves the right to make changes in specifications and other information contained in this document without prior notice, and the reader should in all cases consult POS-X to determine whether any such changes have been made. The information in this publication does not represent a commitment on the part of POS-X. POS-X shall not be liable for technical or editorial errors or omissions contained herein; nor for incidental or consequential damages resulting from the furnishing, performance, or use of this material. This document contains proprietary information that is protected by copyright. All rights are reserved. No part of this document may be photocopied, reproduced, or translated into another language without the prior written consent of seller.

© 2012 All rights reserved.

LIMITED WARRANTY

Limited Warranty Length

3 years from date of purchase (please see Complete Terms and Conditions for limitations)

In the case that a product becomes defective, POS-X offers the choice of one of the following options:

2-Day Advance Exchange

To minimize downtime in the unlikely event of equipment difficulties, POS_X will ship a comparabel replacement unit via 2-Day Shipping prior to receiving the defective unit. A refundable credit card pre-authorization is required for 2-Day Advance Exchange.

Depot Repair

Ship the defective unit to POS-X and our trained technicians will repair the unit, usually with one-day turnaround time, then return the unit to you.

Complete Terms and Conditions

www.pos-x.com/warranty

TECHNICAL ASSISTANCE

Customer Support Center

360.738.8433 | 800.790-8657 | support@pos-x.com

Corporate Headquarters

POS-X Inc.
1975 Midway Lane Suite O
Bellingham, WA 98226
info@pos-x.com
Tel: 360.738.8433
Fax: 360.738.3495

Main URL

www.pos-x.com

Full Owner’s Manual

www.pos-x.com/downloads

NOTES