

ION

Fit Touchscreen Monitor User Manual

Version 1.0 August 2014



1975 Midway Lane, Suite O
Bellingham, WA 98226
sales@pos-x.com
360.738.8433
www.pos-x.com

■ POS-X Warranty

Industry-leading Warranty Protection

- 3 year warranty
- *2-day Advance Exchange - standard on all products
- Warranty extensions and overnight exchanges are available to provide means to further reduce the total cost of ownership

*Available in USA and Canada

■ POS-X Service and Support

24/7 Technical Support and Lifetime Customer Support

- 24/7 access to our USA-based experienced technical support representatives
- Support techs utilize advanced techniques such as remote access for quick and accurate system analysis
- Lifetime support on all POS-X products

The information contained in this document is subject to change without notice. We make no warranty of any kind with regard to this material, including, but not limited to, the implied warranties of merchantability and fitness for a particular purpose. We shall not be liable for errors contained herein or for incidental or consequential damages in connection with the furnishing, performance, or use of this material.

This document contains proprietary information that is protected by copyright. All rights are reserved. No part of this document may be photocopied, reproduced or translated to another language without the prior written consent of the manufacturer.

TRADEMARK

Intel®, Pentium® and MMX are registered trademarks of Intel® Corporation. Microsoft® and Windows® are registered trademarks of Microsoft Corporation. Other trademarks mentioned herein are the property of their respective owners.

Safety

IMPORTANT SAFETY INSTRUCTIONS

1. To disconnect the machine from the electrical Power Supply, turn off the power switch and remove the power cord plug from the wall socket. The wall socket must be easily accessible and in close proximity to the machine.
2. Read these instructions carefully. Save these instructions for future reference.
3. Follow all warnings and instructions marked on the product.
4. Do not use this product near water.
5. Do not place this product on an unstable cart, stand, or table. The product may fall, causing serious damage to the product.
6. Slots and openings in the cabinet and the back or bottom are provided for ventilation; to ensure reliable operation of the product and to protect it from overheating. These openings must not be blocked or covered. The openings should never be blocked by placing the product on a bed, sofa, rug, or other similar surface. This product should never be placed near or over a radiator or heat register, or in a built-in installation unless proper ventilation is provided.
7. This product should be operated from the type of power indicated on the marking label. If you are not sure of the type of power available, consult your dealer or local power company.
8. Do not allow anything to rest on the power cord. Do not locate this product where persons will walk on the cord.
9. Never push objects of any kind into this product through cabinet slots as they may touch dangerous voltage points or short out parts that could result in a fire or electric shock. Never spill liquid of any kind on the product.



CE MARK

This device complies with the requirements of the EEC directive 2004/108/EC with regard to “Electromagnetic compatibility” and 2006/95/EC “Low Voltage Directive”



FCC

This device complies with part 15 of the FCC rules. Operation is subject to the following two conditions:

- (1) This device may not cause harmful interference.
- (2) This device must accept any interference received, including interference that may cause undesired operation

CAUTION ON LITHIUM BATTERIES

There is a danger of explosion if the battery is replaced incorrectly. Replace only with the same or equivalent type recommended by the manufacturer. Discard used batteries according to the manufacturer's instructions.



Battery Caution

Risk of explosion if battery is replaced by an incorrectly type.
Dispose of used battery according to the local disposal instructions.



Safety Caution

Note: To comply with IEC60950-1 Clause 2.5 (limited power sources, L.P.S) related legislation, peripherals shall be 4.7.3.2 "Materials for fire enclosure" compliant.

4.7.3.2 Materials for fire enclosures

For MOVABLE EQUIPMENT having a total mass not exceeding 18kg, the material of a FIRE ENCLOSURE, in the thinnest significant wall thickness used, shall be of V-1 CLASS MATERIAL or shall pass the test of Clause A.2.

For MOVABLE EQUIPMENT having a total mass exceeding 18kg and for all STATIONARY EQUIPMENT, the material of a FIRE ENCLOSURE, in the thinnest significant wall thickness used, shall be of 5VB CLASS MATERIAL or shall pass the test of Clause A.1

LEGISLATION AND WEEE SYMBOL

2012/19/EU Waste Electrical and Electronic Equipment Directive on the treatment, collection, recycling and disposal of electric and electronic devices and their components.



The crossed dustbin symbol on the device means that it should not be disposed of with other household wastes at the end of its working life. Instead, the device should be taken to the waste collection centers for activation of the treatment, collection, recycling and disposal procedure.

To prevent possible harm to the environment or human health from uncontrolled waste disposal, please separate this from other types of wastes and recycle it responsibly to promote the sustainable reuse of material resources.

Household users should contact either the retailer where they purchased this product, or their local government office, for details of where and how they can take this item for environmentally safe recycling.

Business users should contact their supplier and check the terms and conditions of the purchase contract.

This product should not be mixed with other commercial wastes for disposal.


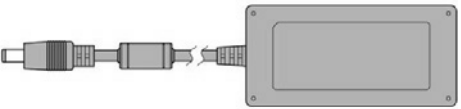

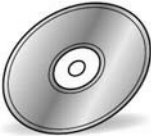
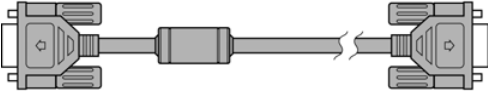
Revision History

Revision	Date	Description
V1.0	March, 2014	● Release

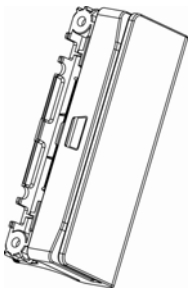
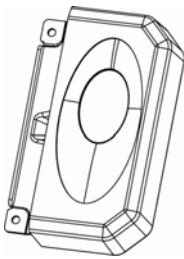

Table of Contents

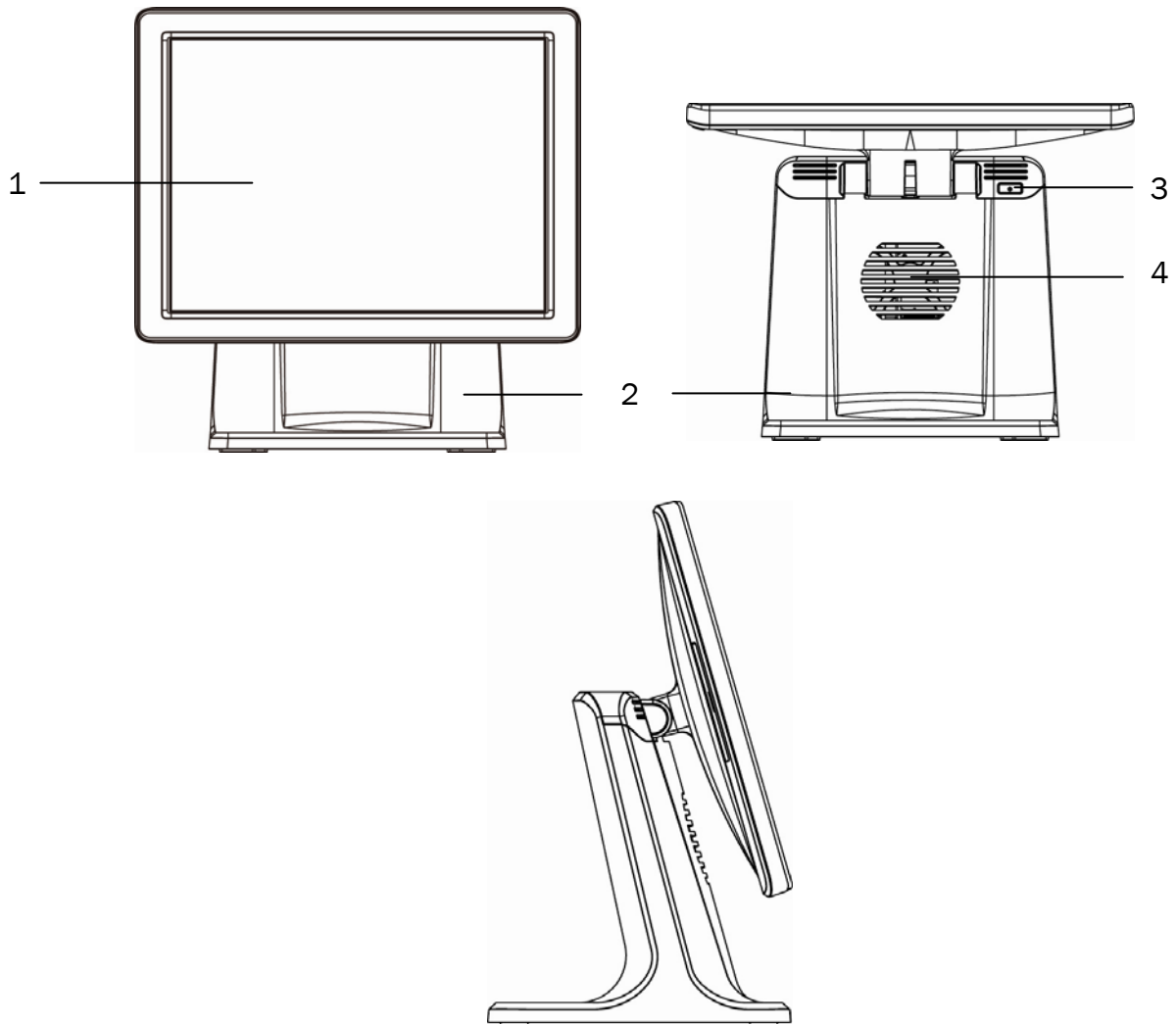
1 Item Checklist.....	1
1-1 Standard Items.....	1
1-2 Optional Items	2
2 System View	3
2-1 Front View & Side View	3
2-2 Rear View	4
2-3 Dimension.....	4
2-4 I/O View.....	5
3 System Assembly & Disassembly.....	6
3-1 Install the Power Adapter.....	6
4 Peripherals Installation.....	7
4-1 Install the MSR Module	7
4-2 Install the Fingerprint Module	8
4-3 Install the Customer Display.....	9
5 Specification	10
6 Jumper Settings.....	11
6-1 Motherboard Layout.....	11
6-2 Connectors and Functions.....	12
6-3 Jumper Settings	13
Appendix: Driver Installation	15

1-1 Standard Items

	
a. System	b. Power adapter (65W)
	
c. Power cable	d. Driver CD
	
e. VGA cable	

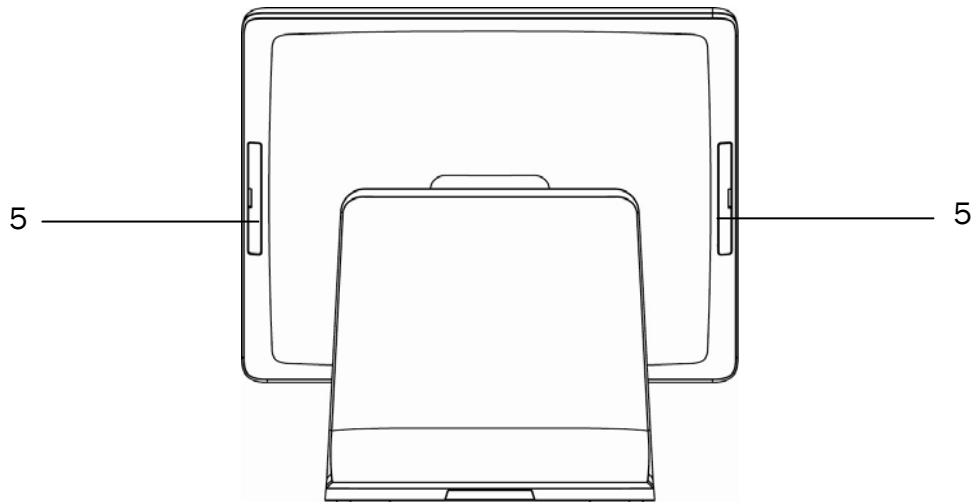
1-2 Optional Items

	
a. MSR module	b. Fingerprint module
	
c. Customer display	

2-1 Front View & Side View

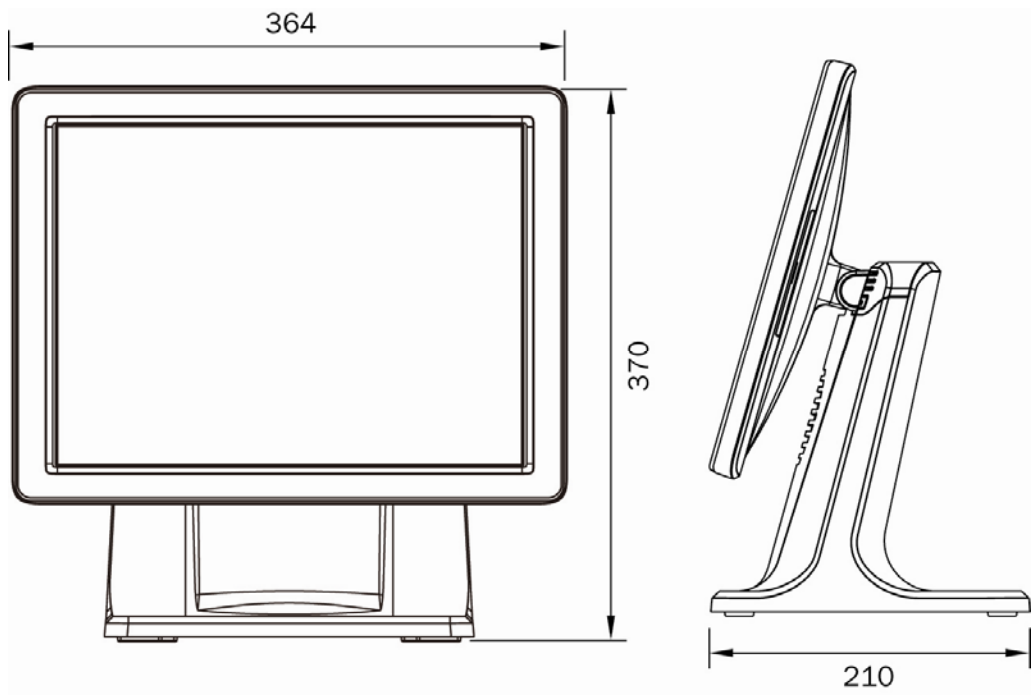
No.	Description
1	Touch screen
2	Stand base
3	Power button
4	Ventilation hole

2-2 Rear View

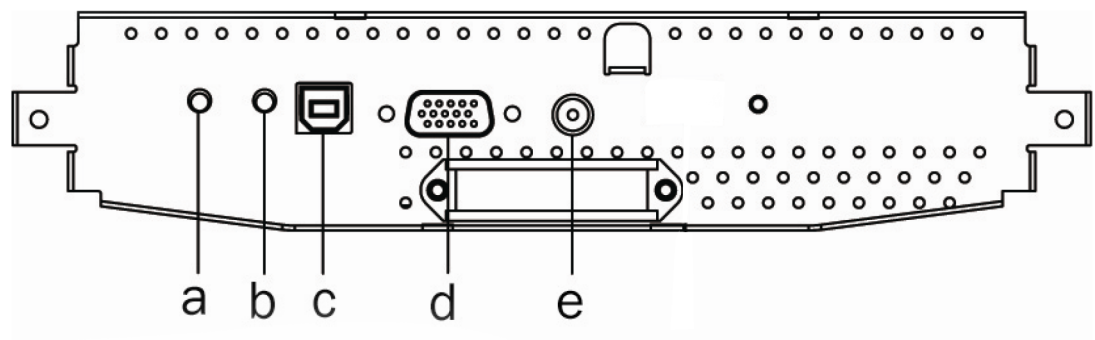


No.	Description
5	MSR /Fingerprint / iButton dummy cover

2-3 Dimension



2-4 I/O View

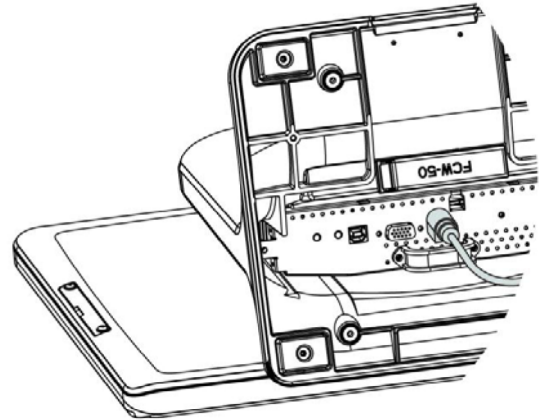


Number	Description
a	OSD button: Auto adjust
b	OSD button: Power
c	USB 2.0 (Type B to PC)
d	VGA
e	DC Jack

3-1 Install the Power Adapter

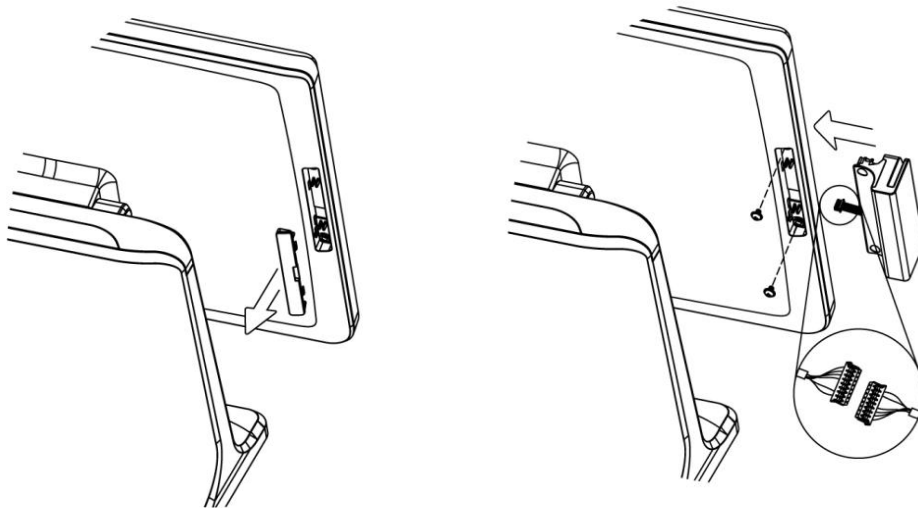
The system is equipped with a 36W power adapter. Please plug it into the system as shown below.

1. Place the system face down. Make sure not to scratch the monitor.
2. You will find the I/O panel located in the bottom of the stand.
3. Find the DC Jack on the I/O panel (refer to chapter 2-4.) and connect the power adapter directly to the DC jack connector

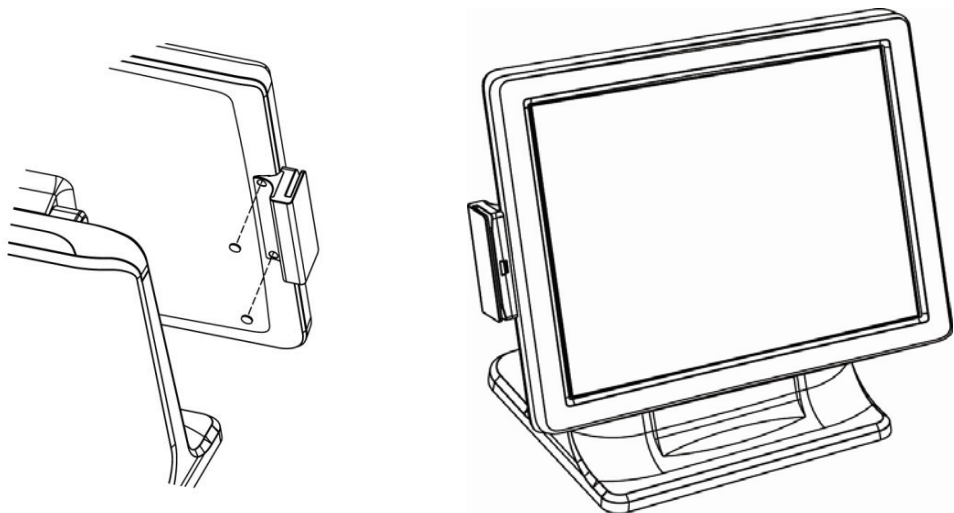


4-1 Install the MSR Module

MSR module can be installed on the right side of the system. Make sure the unit is powered down before starting.

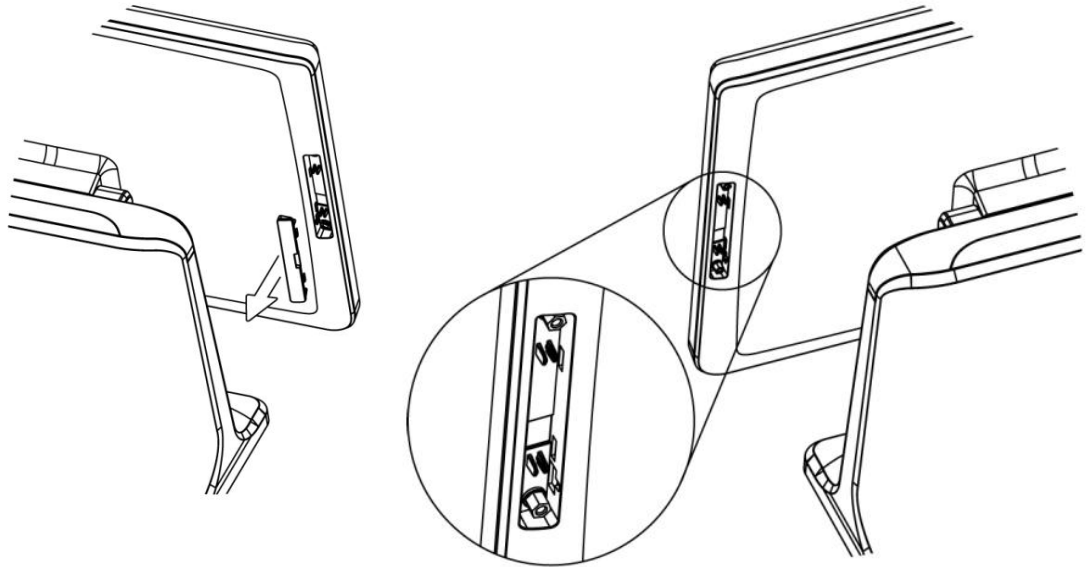


1. Remove the dummy cover first.
2. Connect the MSR cable to the connector on the system side.
3. Remove both M3*6 screws in the MSR compartment.
4. Insert the MSR module in place and fasten the M3*8L screws (x2) on the back to secure the module.

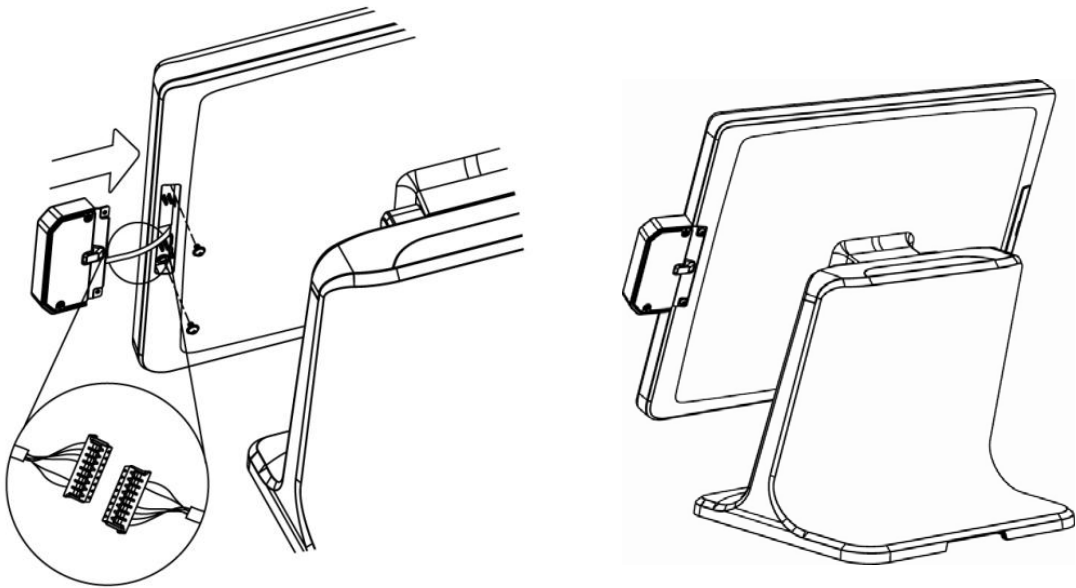


5. Finally cover the screw holes by the rubber pads (x2).

4-2 Install the Fingerprint Module



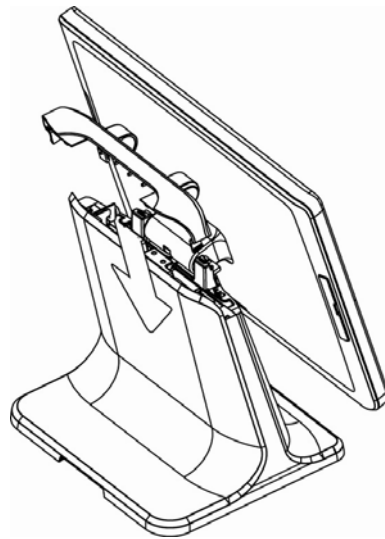
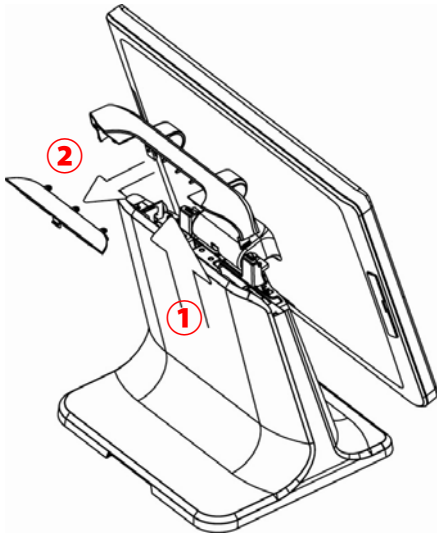
1. Remove the dummy cover first.
2. Remove the M3*6 screws (x2).
3. Fix the hex standoffs (x2) to the screw hole as shown in the picture.



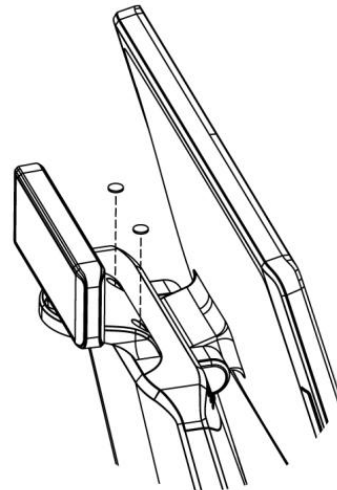
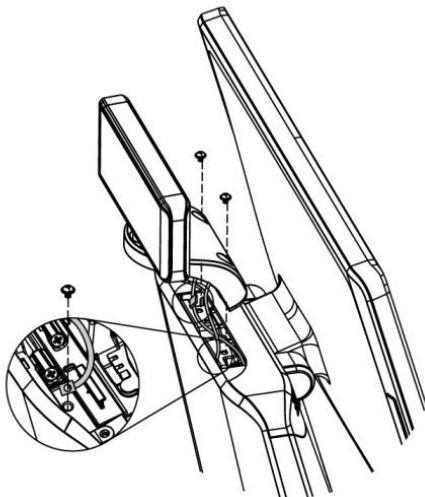
4. Connect the fingerprint cables to the connector on the system side.
5. Insert the fingerprint module in place and fasten the M3*4 screws (x2) on the back to secure the module.

***Please note the M3*6 screws (x2) should be removed before inserting the Fingerprint module.**

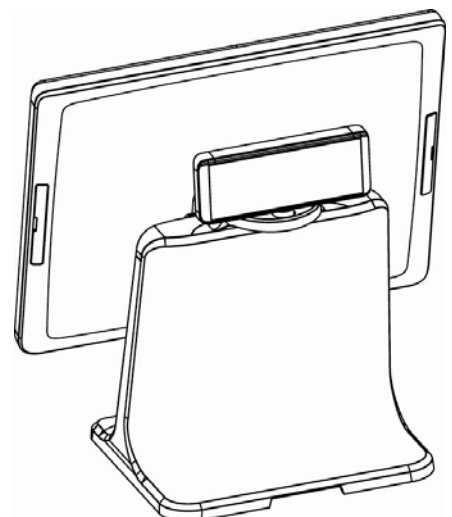
4-3 Install the Customer Display



1. Use both hands to pull the top cover of the stand upwards.
2. Release the plastic plate from the top cover.
3. Connect the customer display cable (x1) to the connector on system side and fasten the ground cable (x1) with a M3*4 screw.

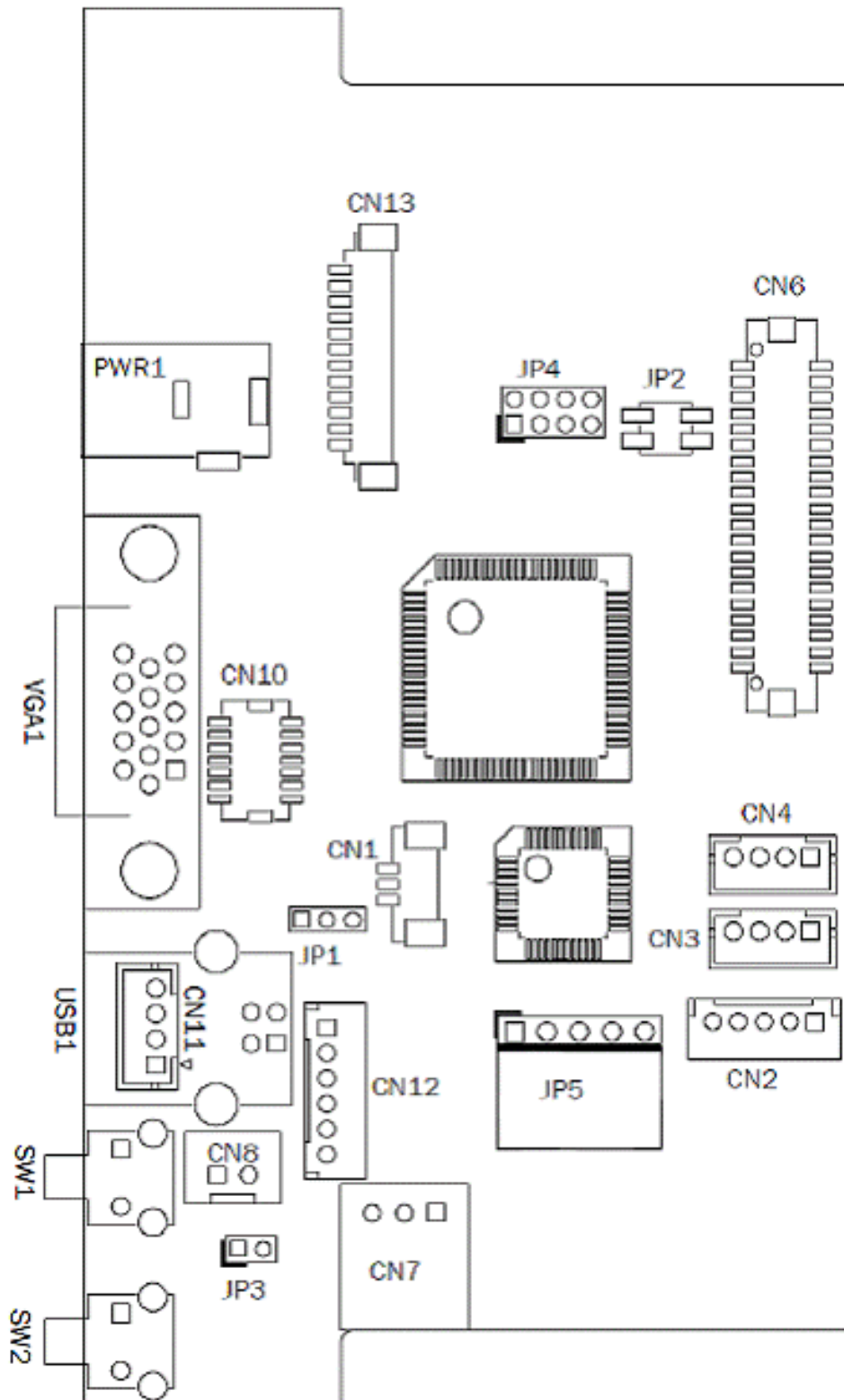


4. Put the top cover of the stand back to the position.
5. Attach the customer display and fasten the M4 screws (x2).
6. Cover the screw holes by the rubber pads (x2).



PART NUMBER	ION-TM3A		
Panel Size	15" (381mm) TFT Active Matrix Display		
Bezel Type	Standard		
Touch Screen	5-Wire Resistive, 50 millions taps per location		
Max Resolution	1024 X 768		
Dimensions (WxDxH)	14.17" x 8.26" x 14.17" (360mm x 210mm x 360mm)		
Weight	11 lbs (5 kg)		
PHYSICAL		ENVIRONMENTAL	
USB	1x USB 2.0 (Type B to PC)	Operating Temperature	32°F to 104°F (0°C to 40°C)
Serial	0	Humidity	20% to 80% Non-condensing
Tilt Angle	40° to 90°	Warranty	3-year warranty with free *2-day Advance Exchange Service
Housing Color	Black	Certifications	FCC Class A, CE, LVD, RoHs, NOM
Stand Style	Cable Management Base	OPTIONAL ACCESSORIES	
Mounting Options	Desktop Placement	ION-MR3	3-Track MSR with USB interface for ION Fit Series
DISPLAY		ION-RD3-LCM	Integrated Rear Display, LCM
Video Interface	Analog RGB (VGA)	ION-BR3	Integrated Biometric Reader
Brightness	250 nits	WARRANTY EXTENSION AND UPGRADES	
Colors	16.7 million colors	ZWE-TMC	2-Year Warranty Extension
Controls	Power on/off, auto tune	ZOE-TMC3	*3-Year Overnight Exchange
Viewing Angle	160°	ZOE-TMC5	*5-Year Overnight Exchange
Housing	ABS Housing		
ELECTRICAL			
Adapter Output	36W, 12V, 3A		

*Available in USA and Canada

6-1 Motherboard Layout

6-2 Connectors and Functions

Connector	Function
CN1	Debug
CN2	USB connector(down-stream)
CN3	USB connector(down-stream)
CN4	USB connector(down-stream)
CN6	LVDS connector
CN7	OSD On/Off LED
CN8	Power switch
CN10	Internal VGA input connector
CN11	USB connector (upstream)
CN12	Keypad connector
CN13	Inverter connector
SW1	Power On/ Off Button
SW2	Auto tune button
USB1	USB connector (upstream)
VGA1	VGA input
PWR1	+12 input
JP1	Touch select
JP2	Inverter select
JP3	Power mode setting
JP4	Panel ID setting
JP5	Touch sensor

6-3 Jumper Settings

Touch Select

Function	JP1 (1-2-3)
ELO	<div> 1 2 3 </div>

Inverter Selection

Function	JP2 (1-2) (3-4)
▲ LED	<div> 1 3 2 4 </div>
CCFL	<div> 1 3 2 4 </div>

Power Mode Setting

Function	JP3 (1-2)
▲ Power on	<div> 1 2 </div>
Power off	<div> 1 2 </div>

LCD ID Setting

Resolution	LVDS		Output Interface	JP4 (1-2) (3-4) (5-6) (7-8)(9-10)
	Bits	Channel		
1024 x 768	24	Single	LVDS	<div> <div>1</div><div>3</div><div>5</div><div>7</div> <div>2</div><div>4</div><div>6</div><div>8</div> </div>
800 x 600	24	Single	LVDS	<div> <div>1</div><div>3</div><div>5</div><div>7</div> <div>2</div><div>4</div><div>6</div><div>8</div> </div>
1280 x 1024	24	Dual	LVDS	<div> <div>1</div><div>3</div><div>5</div><div>7</div> <div>2</div><div>4</div><div>6</div><div>8</div> </div>
1366 x 768	24	Single	LVDS	<div> <div>1</div><div>3</div><div>5</div><div>7</div> <div>2</div><div>4</div><div>6</div><div>8</div> </div>
1366 x 768	18	Single	LVDS	<div> <div>1</div><div>3</div><div>5</div><div>7</div> <div>2</div><div>4</div><div>6</div><div>8</div> </div>
1920 x 1080	24	Dual	LVDS	<div> <div>1</div><div>3</div><div>5</div><div>7</div> <div>2</div><div>4</div><div>6</div><div>8</div> </div>

Appendix: Driver Installation

The shipping package includes a Driver CD. You can find every individual driver and utility that enables you to install the drivers in the Driver CD.

Please insert the Driver CD into a computer with a disk drive and double click on the “index.htm” to pick the model and required driver. For more information please visit www.pos-x.com.



1975 Midway Lane, Suite O
Bellingham, WA 98226
sales@pos-x.com
360.738.8433
www.pos-x.com